

Southeastern Fastener Association

*...in an industry which "holds the world together"*

# TAMPA

APRIL 12-14, 2016

## ANNUAL SPRING MEETING

Business Meetings

Golf Opportunities

Social Events

Networking

Entertainment



INTERCONTINENTAL®  
TAMPA



**Don't miss the endless opportunities offered as we host our Annual Spring Meeting at InterContinental Hotel, Tampa**

**Tuesday, April 12th**

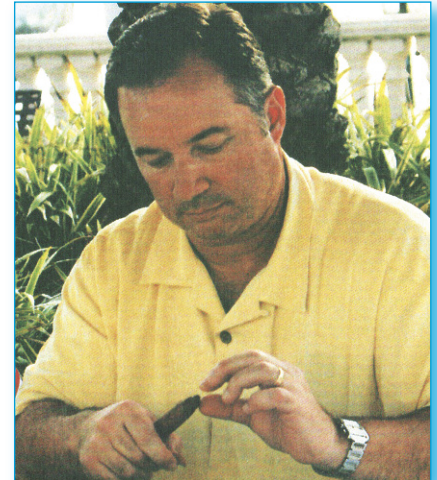
- 1:00 p.m. Board Meeting
- Scholarship Committee Meeting
- 7:00 p.m. - 9:00 p.m. Welcome Reception including Food & Beverage as well as **Cigar Making** demonstration by Master Cigar Blender Jim Tyre of Cammarata Cigar Co.
- Experience The Fire Of Flamenco**
- Enjoy a captivating performance by the Columbia Restaurant Dance Troupe

**Wednesday, April 13th**

- 11:00 a.m. Lunch at Golf Course
- 11:30 a.m. Shot Gun Start
- 6:30 p.m. Reception, Dinner, Awards, Silent Auction

**Thursday, April 14th**

- 8:00 a.m. Continental Breakfast
- 8:30 a.m. Membership Business Meeting
- 9:45 a.m. Al Bates *How to Increase Profits-Tools & Strategies to Improve Profitability*
- 11:30 a.m. Panel Discussion - *Do's and Dont's of Improving the Bottom Line*  
Panelists: Doug Ruggles/Martin Fastening, Jake Davis/BTM  
Craig Penland/Eurolink FSS, LLC
- 12:30 p.m. Lunch and Supplier Introductions
- 1:30 - 3:30 p.m. One on One Appointments with Al Bates - *15 minute time slot*



**Jim Tyre**

**Book your room now at the InterContinental Hotel 813-286-4400**

**Room rates are \$145 inclusive of:**

Complimentary: airport shuttle, access to Business Center, Fitness Center, Rooftop Pool, self-parking in garage, and Guestroom Internet

**Book your reservations now by either:**

- Calling the hotel direct @ 813-286-4400 and speaking to reservations department
- Going online to <https://resweb.passkey.com/go/8a40d3e8>

Dr. Albert D. Bates is founder and Chairman of the Profit Planning Group, a research and executive education firm headquartered in Boulder, Colorado.

He makes approximately 100 presentations each year on topics such as Improving the Bottom Line, Getting Serious About Profit, Doing More with Less, and Pricing for Profit. He also provides strategic direction for the firm's investigation into profitability research for over seventy different trade associations.

He has written extensively in both the professional and trade press, including the Harvard Business Review, the California Management Review and Business Horizons. In addition he writes the quarterly Profit Improvement Reports for the firm's trade association clients.

Learn more about the Profit Planning Group, by visiting [www.profitplanninggroup.com](http://www.profitplanninggroup.com)



**Al Bates**



## Golf Registration

Wednesday, April 13th

11:00 a.m. Lunch at Golf Course

11:30 a.m. Shot Gun Start

\$75 per player includes range balls, all greens fees, cart and lunch.

Please complete this form and return with your registration. Proper golf attire required.

### Players Names/Company

---



---



---



---

YES, Please list our company as a hole sponsor – **ADD \$100 per hole**

YES, Full screen ad \$30 per display Number of ad \_\_\_\_\_

YES, Quarter screen ad \$20 per display Number of ad \_\_\_\_\_

**Westchase Golf Club** is a premium daily-fee facility recognized by the National Golf Foundation for its outstanding course conditions, service and value. The CLASP award (Customer Loyalty and Satisfaction) is given to the best of the more than 400 courses that participate in this NGF program. Westchase placed in the top ten of the national rankings and number one in the state of Florida.

Nationally known architect Lloyd Clifton designed the 6699-yard, par 72 course, which winds through natural wetlands, wooden bridges and bulkheads. Called "one of the most beautiful public-access courses in the Tampa area," Westchase has earned a high rating from Golf Digest as well as a Great Value award.

Their signature 3rd hole is a par 3 over water. Pro tips and accurate yardages are available on a full color, state-of-the-art GPS system. Golfers of different skill levels enjoy a challenging round of golf through 213 acres of lakes, woods and scenic conservation areas.

**Include your company ad on the course GPS system  
(You don't have to be a golfer to have an ad)**

**There is limited availability so ads will be sold on  
first come, first serve basis.**

**Upon ordering an ad, specs will be forwarded to you.**

### Amount

---



---



---



---

### Please check if sending separate form


**Total**

---



---

Your company's name will be listed as a sponsor in all event areas where possible.

**NOTE:** Rental clubs are available directly through West Chase for \$40. Please indicate if you will need rental clubs.

You can pay the course when you arrive but we will be sure they have a set reserved for you.

Please reserve rental clubs  How many sets \_\_\_\_\_

Yes, scoring, range balls, scorecards, cart signs and gps ads all come included in your package

[PLEASE ATTACH THIS FORM TO THE CONFERENCE REGISTRATION FORM.](#)

See insert pages for registration forms, maps and driving directions.

Westchase Golf Club • 11602 Westchase Golf Drive • Tampa, FL 33609  
813-854-2331 [www.westchasegc.com](http://www.westchasegc.com)

**Remember you don't  
have to be a golfer  
to sponsor a hole or  
have a GPS ad!**



**InterContinental Hotel Tampa**  
4860 West Kennedy Blvd.  
Tampa, FL 33609  
813-286-4400

**Westchase Golf Club**  
11602 Westchase Golf Drive  
Tampa, FL 33609  
813-854-2331



The Southeastern Fastener Association will hold their 2016 conference in Tampa, FL. The Tampa and Tampa Bay areas are home to a young and vibrant community with charm and a welcoming sense of place. InterContinental Tampa is located in the district of Westshore, where many of the best Tampa, FL activities and events are available to guests.

Historically, Tampa is known for its abundant fishing area and over time has grown into a thriving business district and gorgeous beach destination. One of the largest natural harbors and estuaries in the country, Tampa offers a diverse selection of activities and attractions including aquariums, museums and Fortune 500 businesses.

InterContinental Tampa is also less than 30 minutes from beautiful Gulf Coast beaches, within walking distance of the Westshore Plaza mall, and near many of Tampa's incredible sports and entertainment venues. This beautiful Tampa, Florida, hotel is also just over an hour's drive from famous Orlando attractions, including Walt Disney World® and SeaWorld Orlando®.

*See Travel Info sheet for more details.*

**Be sure your employees are aware of SEFA Scholarship deadline March 1st.**

**This year, the Mike Jones Family will generously be donating a \$4,000 Slater Jones Scholarship in memory of the late Slater Jones.**



**Southeastern Fastener Association**

*... in an industry which "holds the world together"*

P.O. Box 473, Lake Zurich, IL 60047 847-370-9022 Fax 847-516-6728

E-Mail: [sefa@thesefa.com](mailto:sefa@thesefa.com)

Website: [www.thesefa.com](http://www.thesefa.com)